

LOOK! UP IN THE SKY!

IS IT A BIRD?

IS IT A PLANE?

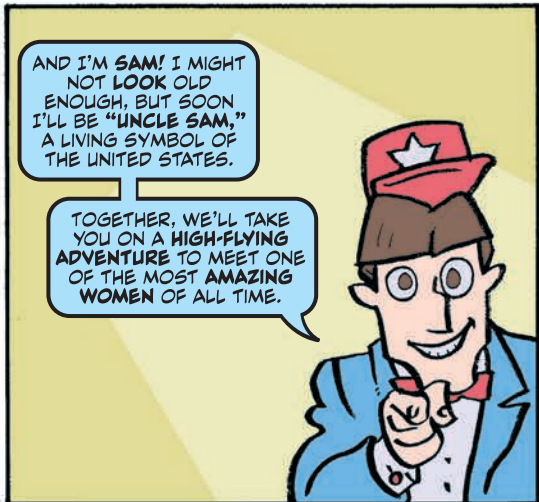
OR IS IT A PIONEER IN A PLANE?!

IT'S **AMELIA EARHART!**



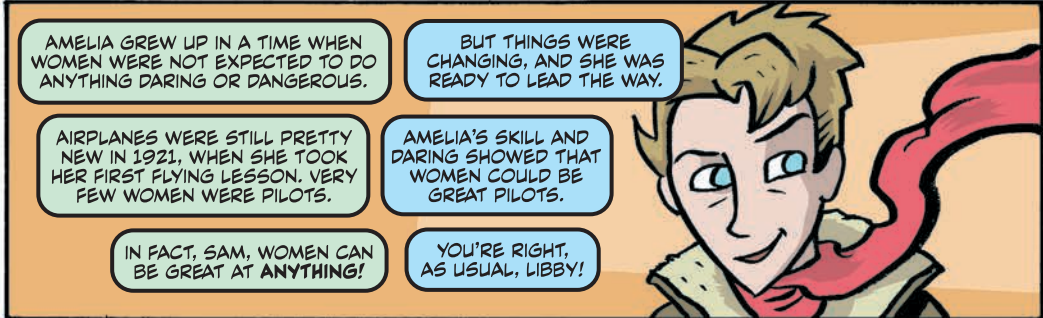
I'M LIBBY. YOU MIGHT KNOW ME AS "LADY LIBERTY," THE STATUE THAT STANDS IN NEW YORK CITY'S HARBOR.

I'LL BE ONE OF YOUR GUIDES AS WE SHOW YOU HISTORY!



AND I'M SAM! I MIGHT NOT LOOK OLD ENOUGH, BUT SOON I'LL BE "UNCLE SAM," A LIVING SYMBOL OF THE UNITED STATES.

TOGETHER, WE'LL TAKE YOU ON A HIGH-FLYING ADVENTURE TO MEET ONE OF THE MOST AMAZING WOMEN OF ALL TIME.



AMELIA GREW UP IN A TIME WHEN WOMEN WERE NOT EXPECTED TO DO ANYTHING DARING OR DANGEROUS.

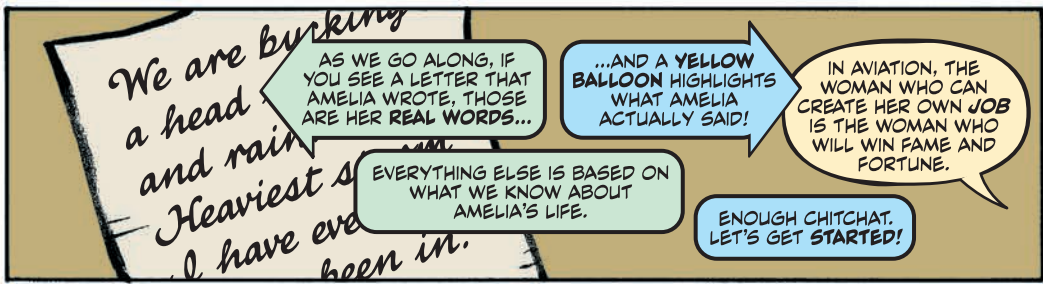
BUT THINGS WERE CHANGING, AND SHE WAS READY TO LEAD THE WAY.

AIRPLANES WERE STILL PRETTY NEW IN 1921, WHEN SHE TOOK HER FIRST FLYING LESSON. VERY FEW WOMEN WERE PILOTS.

AMELIA'S SKILL AND DARING SHOWED THAT WOMEN COULD BE GREAT PILOTS.

IN FACT, SAM, WOMEN CAN BE GREAT AT ANYTHING!

YOU'RE RIGHT, AS USUAL, LIBBY!



*We are burying a head and rain. Heaviest s... I have ever been in.*

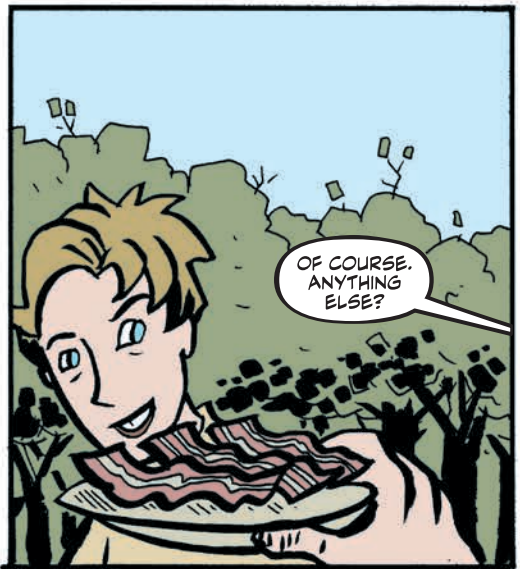
AS WE GO ALONG, IF YOU SEE A LETTER THAT AMELIA WROTE, THOSE ARE HER REAL WORDS...

...AND A YELLOW BALLOON HIGHLIGHTS WHAT AMELIA ACTUALLY SAID!

IN AVIATION, THE WOMAN WHO CAN CREATE HER OWN JOB IS THE WOMAN WHO WILL WIN FAME AND FORTUNE.

EVERYTHING ELSE IS BASED ON WHAT WE KNOW ABOUT AMELIA'S LIFE.

ENOUGH CHITCHAT. LET'S GET STARTED!



1932

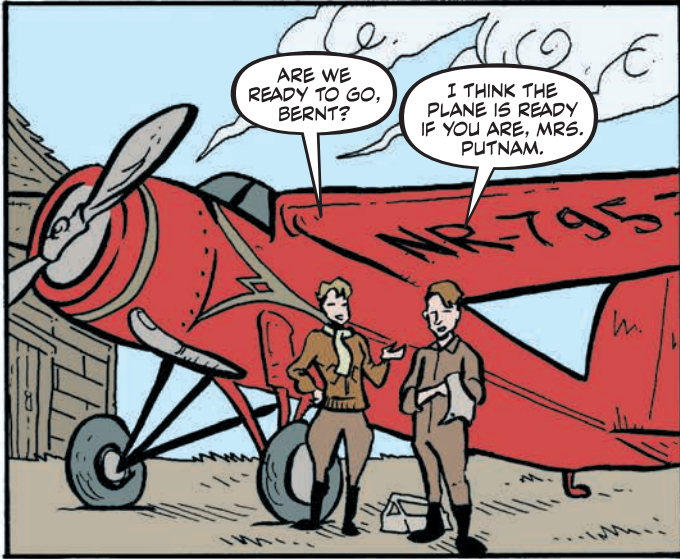


HA! NICE GOING, DUDE!

ACTUALLY, GEORGE PUTNAM SHOULD NOT HAVE BEEN THAT SURPRISED. AFTER ALL, HIS WIFE WAS AMELIA EARHART.

SO?

SO THIS WAS 1932 AND AMELIA WAS THE MOST FAMOUS FEMALE FLYER THE WORLD HAD EVER SEEN.



ARE WE READY TO GO, BERNT?

I THINK THE PLANE IS READY IF YOU ARE, MRS. PUTNAM.



THAT'S MISS EARHART, PLEASE, BERNT. MR. PUTNAM IS MY HUSBAND, BUT HE DOESN'T OWN ME.

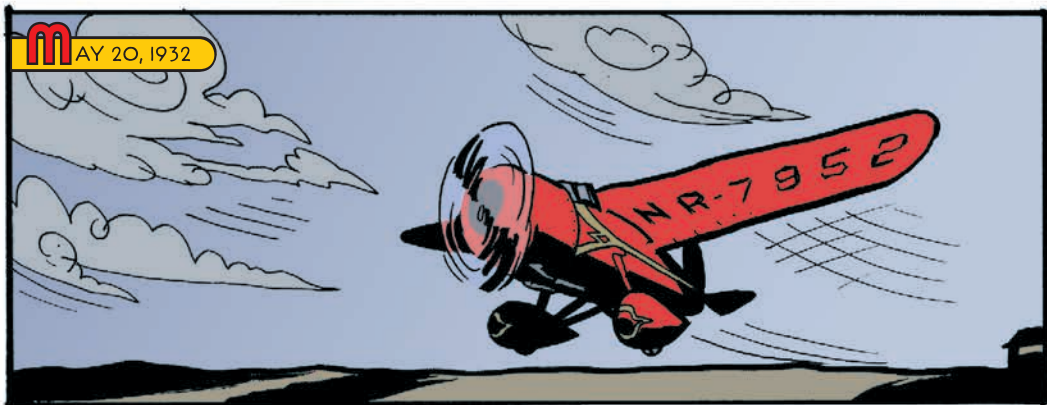


WE WISH YOU THE BEST OF LUCK ON YOUR AMAZING FLIGHT.

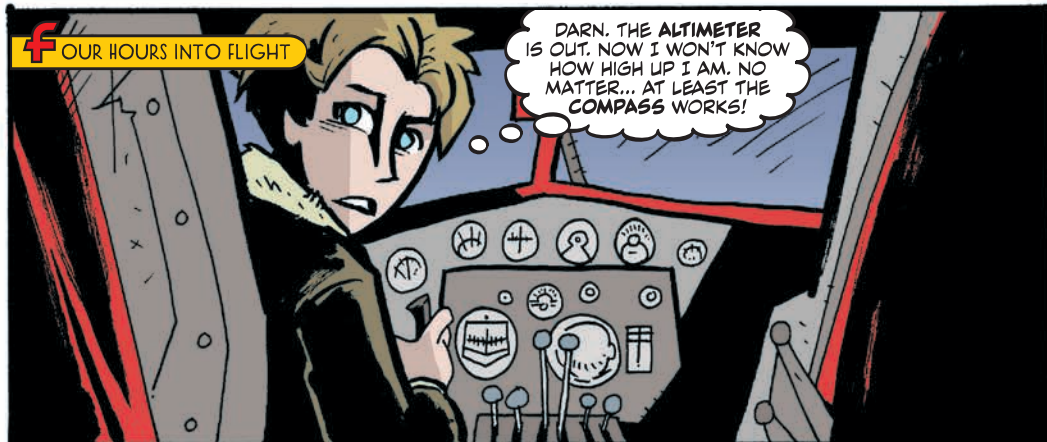


THANK YOU, SIR. I HOPE THAT LUCK HAS LITTLE TO DO WITH IT.

**M**AY 20, 1932



**F**OUR HOURS INTO FLIGHT



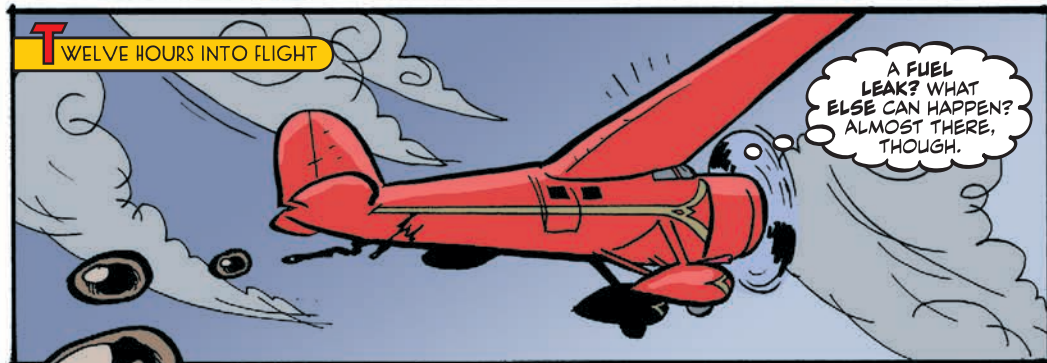
DARN. THE ALTIMETER IS OUT. NOW I WON'T KNOW HOW HIGH UP I AM. NO MATTER... AT LEAST THE COMPASS WORKS!

**S**EVEN HOURS INTO FLIGHT



LOOKS LIKE I'LL HAVE TO GET A LITTLE LOWER. THAT ICE COULD CAUSE PROBLEMS.

**T**WELVE HOURS INTO FLIGHT



A FUEL LEAK? WHAT ELSE CAN HAPPEN? ALMOST THERE, THOUGH.

